

FH Series

Mobile Field Health Workstations



FH Series with PowerSwap Nucleus®
CLASSIC Power System

Print, Test, Scan and Maneuver with the FH Series
www.newcastlesys.com/fhseries

FH Series Mobile Field Health Workstations

The FH Series Mobile Field Health Workstation was designed to accommodate mobile printing for outdoor testing sites, temporary health care facilities and more. The FH Series raises productivity by providing mobile power to your devices including laptops, barcode printers, scanners, inkjet or laser printers for 8+ hours at a time.



FH Series shown with optional accessories

Benefits Include:

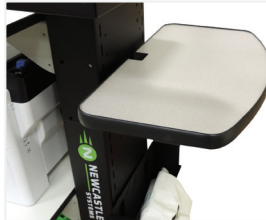
- Worker Safety: Keep your people safe distances apart by enabling “personal” mobile printing, scanning, computing, etc.
- Easy Wipe-Down: HDPE adjustable shelves can be easily disinfected
- Heavy Duty Casters: 8” rugged casters accommodate use in parking lots, on gravel, or uneven surfaces
- Power System to Fit Your Needs: Swappable lightweight lithium batteries for 24/7 operation or SLA for 8-12+ hours of operation



Swappable lithium battery system



8” rugged casters



Optional HDPE mini shelf

All FH Series workstations come standard with (1) adjustable HDPE antimicrobial shelf, power system, integrated power strip, trash can and holder. Unit is not waterproof; do not use in rain, snow, puddles, etc.

Technical Specifications

Height Adjustable:	Shelf adjustable from 20-40” (508-1016 mm)		
Shelf Capacity:	Antimicrobial High Density Polyethylene (HDPE); 75 lbs (34 kg)		
Casters:	5” (standard) or 8” rugged casters		
Color & Construction:	Black powder coat & steel, HDPE shelves		
Model Configurations:	FH207NU*	FH1010	FH2020
Typical Devices Powered for 8 Hours:	Laptop, small thermal printer, scanner & inkjet printer	Laptop, industrial thermal printer or (2) small thermal printers, scanner & inkjet printer	Laptop, industrial thermal printer or (2) small thermal printer and laser printer
Popular Optional Accessories:	B122: Document holder B129: 12x21” HDPE Mini shelf	B124-FH: HDPE middle shelf B132: Scanner holder	B128: 3” drawer B146: 10x8” Small printer shelf
Battery Type:	Lithium Iron Phosphate		Sealed Lead Acid
Continuous Output Power (W):	120 (1 battery) 240 (2 batteries)	1000	2000
Surge Power:	550 (1 battery) 825 (2 batteries)	2000	4000
Battery Bank (Wh):	460 (1 battery) 920 (2 batteries)	1200	2400
Charge Time (Hrs):	4	5	6
Operating Temp (F):	50-104°	32-104°	-4-104°
Weight:	128-140 lbs (58-64 kg)	193 lbs (88 kg)	272 lbs (124 kg)
Dimensions:	26” long x 24” wide x 43” high (660 x 610 x 1092 mm)		

*Requires purchase of (1-4) PSNU3.6 battery packs and (1) PWC2FC PowerCharge station.